

WATER COOLER MODELS
OASIS® P8M, PLF8MH, P14M, PLF14MY, PLF14MH, PM
SUNROC NSW8, NSW14, NSWDLR
INSTRUCTIONS

1. INSPECTION

Inspect the carton and water cooler for evidence of rough handling and concealed damage. Damage claims should be filed with the carrier.

2. MAINTENANCE

The only maintenance operation required is the removal of dirt and lint from the condenser. Inspection should be made at 3 month intervals. Disconnect the power supply cord, then clean the condenser with a small stiff non-wire brush, when required. Observance of this procedure will insure adequate air circulation through the condenser so operation is efficient and economical.

3. OVERLOAD PROTECTION

The compressor motor is equipped with an automatic reset protector which will disconnect the motor from the line in case of an overload.

4. LUBRICATION

This unit is equipped with hermetically sealed compressor and requires no additional lubrication. If the unit is equipped with a fan motor having oil holes, it seldom needs oiling, but if required, few drops of SAE 10 oil should be used.

5. TO PUT WATER COOLER INTO SERVICE

- a) **Note:** The following states require a licensed plumber to install cooler; AR, GA, MA, MI, OK, RI, SC, SD, TX, VT and WI. CA, KS, MN, NM and OR allow for a state-registered installer or contractor as well. State and local plumbing codes may prohibit the use of saddle tapping valves for water line connection in some applications. All connections must conform to applicable plumbing codes.
- b) Locate and install plumbing and electrical service in accordance with the roughing-in drawing. Filter units have additional instructions on a label inside the access panel. Read these before installing the unit.
- c) Install unit on the wall hanger.
- d) Install a trap in the waste line and a shut-off valve in the water supply line. Internal waste line and trap should be wrapped with insulating tape to prevent sweating.
- e) Use clean 3/8" OD copper tubing for water supply line.
- f) To fill the cold water tank, open the shut-off and bubbler valves. Deflect stream from bubbler and run water until stream free of bubbles.
- g) Rotate fan blade by hand to see that it is free of obstructions.
- h) On hot and cold model, fill the water heating tank by drawing water from the hot water dispenser until the stream is free of bubbles.
- i) Check the available power supply against the water cooler data plate to assure correct electrical service. Plug power supply cord into receptacle.
- j) On hot and cold model, make certain the hot water tank contains water. Then turn the hot water tank heater switch to the "ON" position. **DANGER; WATER DISPENSED FROM THE HOT FAUCET CAN SCALD.**

6. WATER VALVE ADJUSTMENT ON WATER COOLED MODELS

The valve is factory set and will not ordinarily require readjustment. If adjustment is required, turn the adjusting stem of the valve counterclockwise to increase flow, clockwise to decrease flow. Do not adjust more than 1/8 turn at a time and never adjust more than 1/2 turn total in either direction.

7. TO DISCONTINUE USE OF WATER COOLER

- a) Remove the front panel.
- b) Disconnect the power supply cord.
- c) Close the water shut-off valve.
- d) On hot and cold model, the hot water tank heater switch should be in the "OFF" position.
- e) Provide container to catch water and remove drain plug(s) from tank(s).
- f) Remove plug from condenser drain tube when the unit is a water cooled model.
- g) Remove or open bubbler valve and, if any, the glassfiller and hot valve. Replace plug(s) when draining is complete.
- h) **ALWAYS DRAIN ALL WATER WHEN FREEZING TEMPERATURES ARE ANTICIPATED AND BEFORE SHIPPING THE WATER COOLER.**

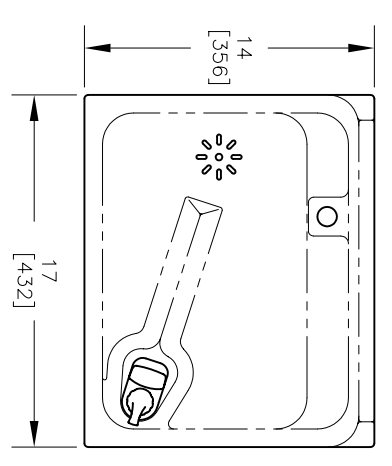
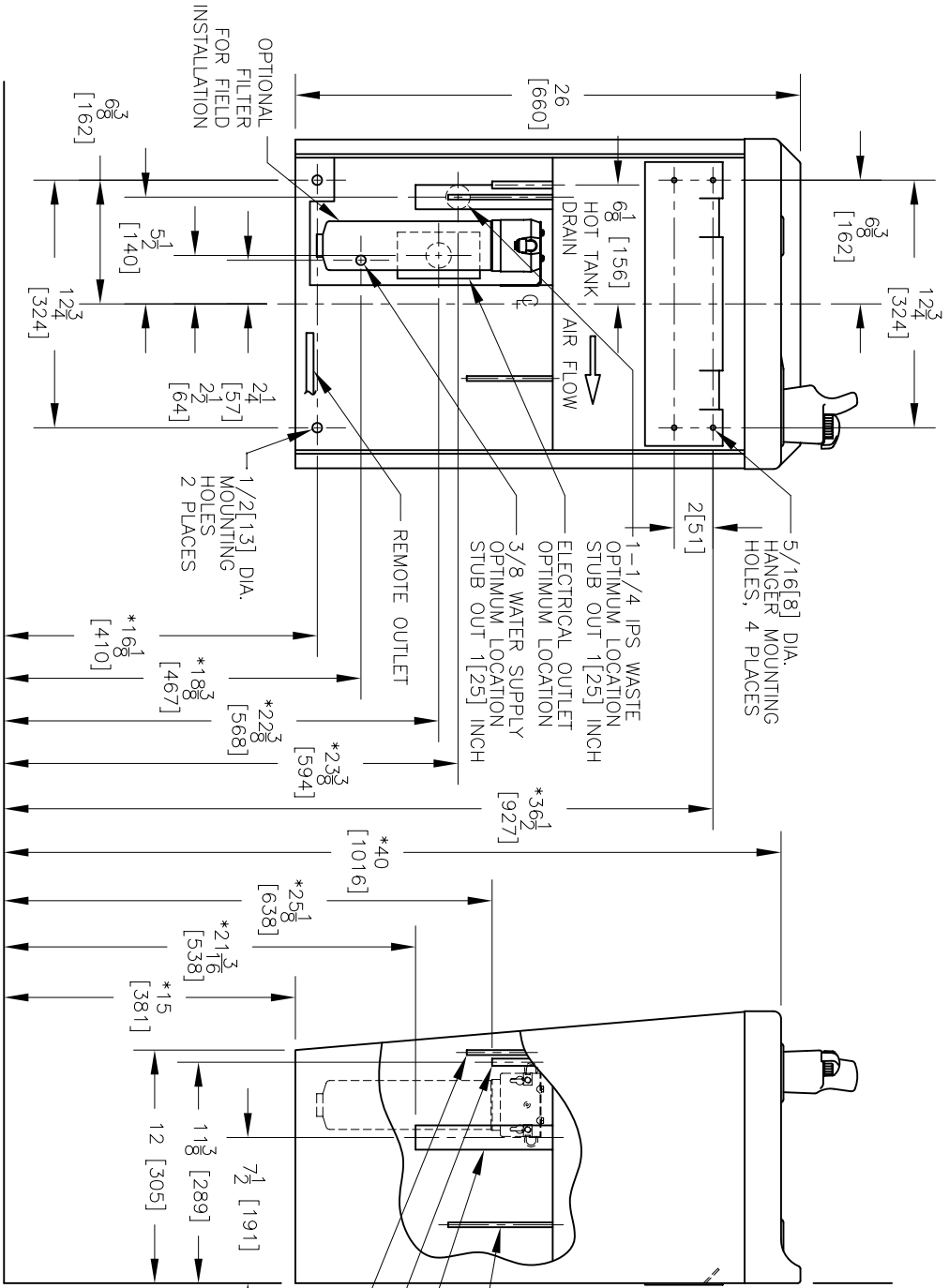
WARNING

The warranty and the Underwriters' Laboratory listing for this machine are automatically voided if this machine is altered, modified, or combined with any other machine or device. Alteration or modification of this machine may cause serious flooding and/or hazardous electrical shock or fire. **EXCEPT AS SET FORTH HEREIN, THE MANUFACTURER MAKES NO OTHER WARRANTY, GUARANTEE OR AGREEMENT EXPRESSED, IMPLIED OR STATUTORY, INCLUDING ANY IMPLIED WARRANTY OR MERCHANTABILITY OR FITNESS FOR A PARTICULAR PURPOSE.**



222 East Campus View Blvd. • Columbus, OH 43235 U.S.A.
1-800-950-3226
www.oasiscoolers.com

WATER COOLER MODELS
OASIS® P8M, PLF8MH, P14M, PLF14MY, PLF14MH, PM
SUNROC NSW D8, NSW D14, NSW DLR



- HOT TANK DRAIN (WHERE APPLICABLE)
- 1-1/4 O.D. TAILPIECE
- 3/8 O.D. WATER INLET
- WATER COOLED CONDENSER DRAIN (IF APPLICABLE)

NOTES:

1. TRAP, STOP VALVE AND ELECTRICAL OUTLET NOT FURNISHED.
2. ALLOW 4 INCHES [102 MM] MIN. PER SIDE FOR VENTILATION.
- *3. RECOMMENDED ADULT HEIGHT INSTALLATION SHOWN. ADJUST VERTICAL DIMENSIONS AS REQ'D TO COMPLY WITH FEDERAL, STATE, AND LOCAL CODES.
4. ALL DIMENSIONS ARE IN INCHES. DIMENSIONS IN BRACKETS [] ARE IN MILLIMETERS.

THIRD ANGLE PROJECTION

ROUGHING-IN AND DIMENSIONAL DRAWING

VALVE INSTALLATION/ADJUSTMENT INSTRUCTIONS

- 1) REMOVE HANDLE (DIAL-A-DRINK MODELS ONLY), UNSCREW AND REMOVE NOZZLE, LIFT OFF BUBBLER GUARD (SEE DIAGRAM ON BACK).
- 2) PLACE FRICTION WASHER ON BUBBLER SPUD FIRST, THEN GASKET. SCREW VALVE ONTO SPUD, TIGHTEN SECURELY TO PREVENT LEAKS.
- 3) STREAM HEIGHT SHOULD BE 5-1/2". TO REGULATE, TURN NEEDLE ADJUSTER CLOCKWISE TO LOWER STREAM OR COUNTER-CLOCKWISE TO RAISE STREAM.
- 4) PLACE PLASTIC WASHER(S) ON VALVE NOZZLE HOLE AND ASSEMBLE BUBBLER GUARD OVER VALVE.
- 5) SCREW NOZZLE FIRMLY INTO PLACE.
- 6) POSITION HANDLE WITH A 1/32" VERTICAL CLEARANCE BETWEEN HANDLE AND BUBBLER GUARD ON THE SIDE NEAREST NOZZLE. TIGHTEN SET SCREW ONLY ENOUGH TO PREVENT REMOVAL.

026557 REV. A

