



**T&S BRASS AND BRONZE WORKS, INC.**  
 2 Saddleback Cove / P.O. Box 1088  
 Travelers Rest, SC 29690

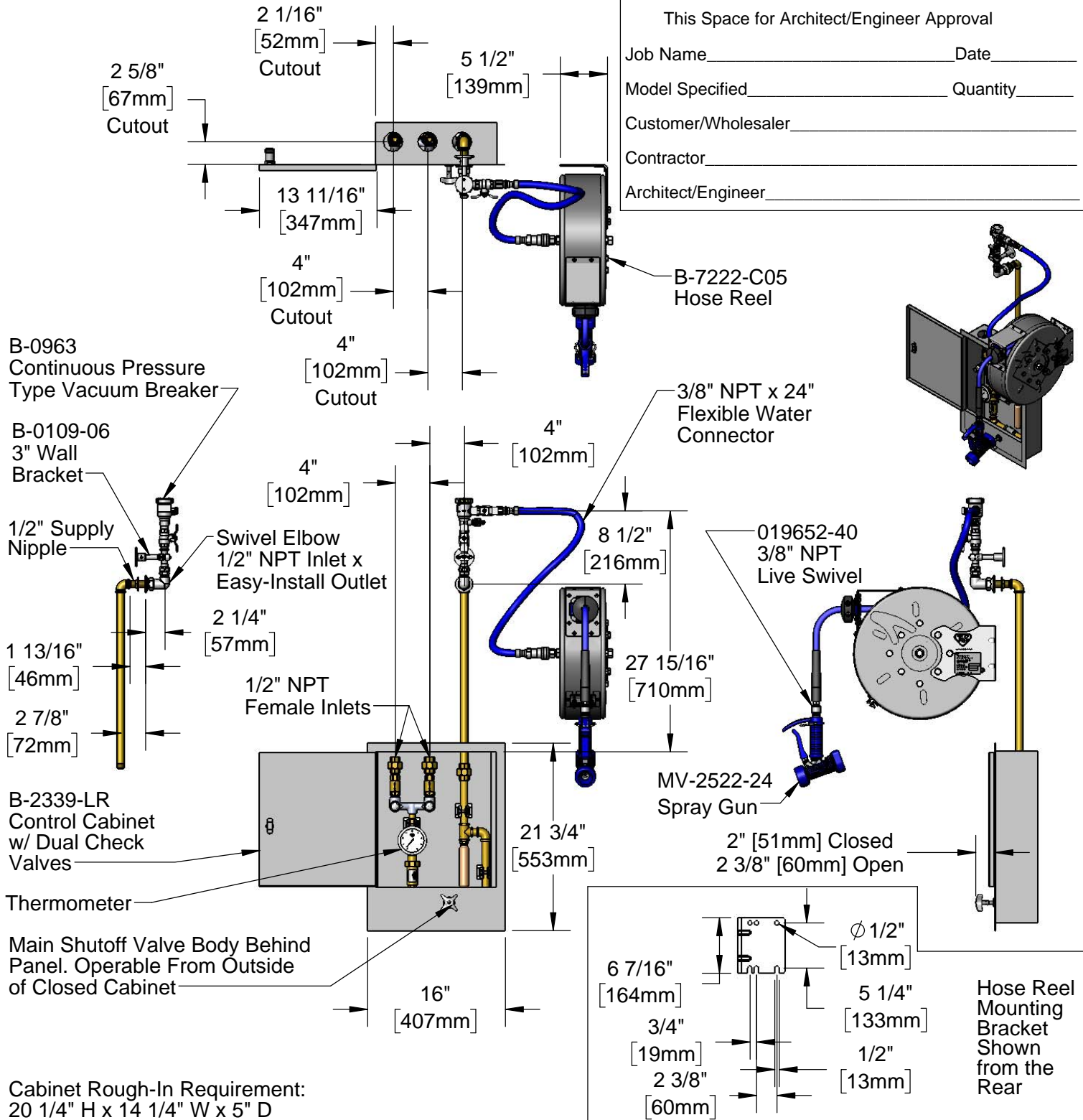
Model No.  
**B-2339-02**

Item No.

Travelers Rest, SC: 800-476-4103 • Simi Valley, CA: 800-423-0150 • Fax: 864-834-3518 • www.tsbrass.com

This Space for Architect/Engineer Approval

Job Name \_\_\_\_\_ Date \_\_\_\_\_  
 Model Specified \_\_\_\_\_ Quantity \_\_\_\_\_  
 Customer/Wholesaler \_\_\_\_\_  
 Contractor \_\_\_\_\_  
 Architect/Engineer \_\_\_\_\_



Product Specifications:  
 Enclosed Hose Reel w/ 30' Hose, Front Trigger Water Gun w/ Swivel, Continuous Pressure Vacuum Breaker, Rinse Control Cabinet w/ Control valve, Dual Check Valves, Thermometer, Water Hammer Arrestor & 3" Wall Bracket

Product Compliance:  
 ASME A112.18.1 / CSA B125.1  
 NSF 61 Exempt (Non-Potable)  
 EPA Act 2005 Non-Compliant (PRSV)  
 ASSE 1056 (VB)

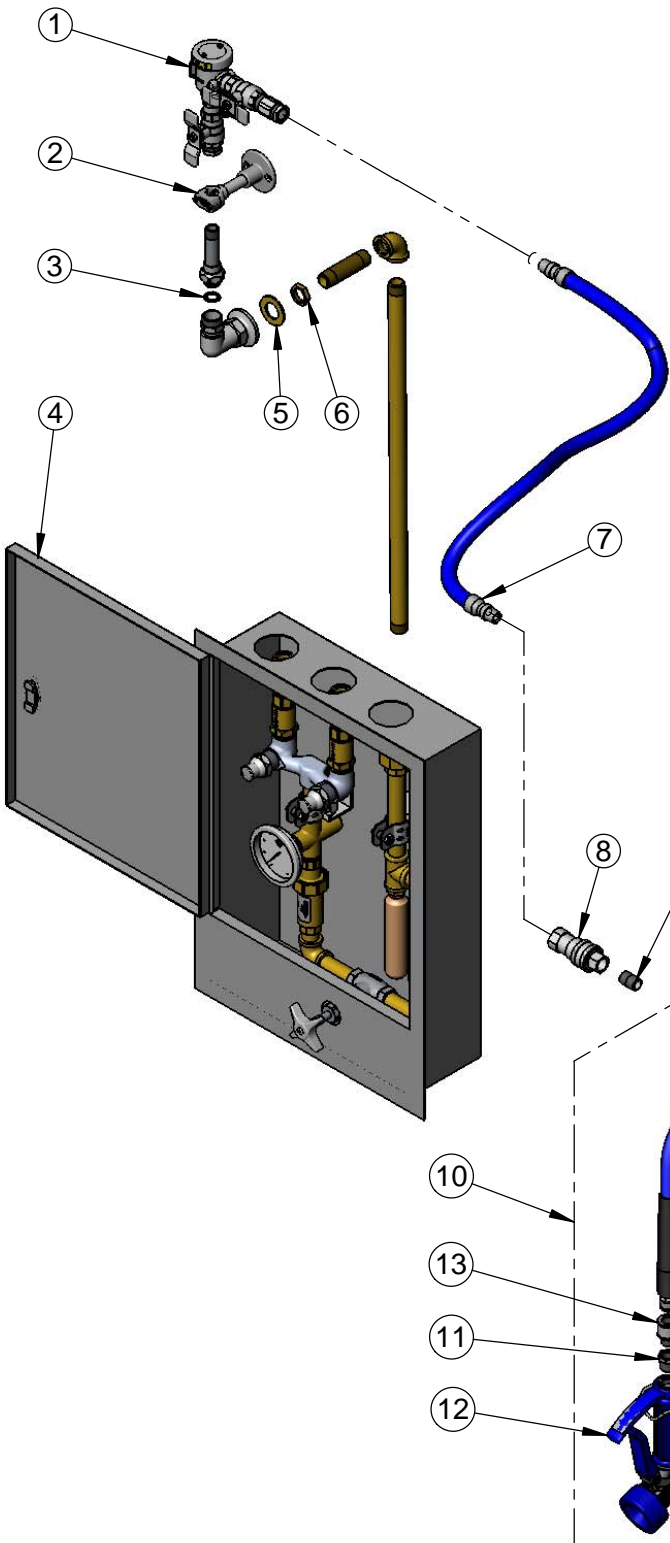


**T&S BRASS AND BRONZE WORKS, INC.**  
 2 Saddleback Cove / P.O. Box 1088  
 Travelers Rest, SC 29690

Model No.  
**B-2339-02**

Item No.

Travelers Rest, SC: 800-476-4103 • Simi Valley, CA: 800-423-0150 • Fax: 864-834-3518 • www.tsbrass.com



ITEM NO.	SALES NO.	DESCRIPTION
1	B-0963	1/2" NPT Continuous Pressure VB w/ Integral Check Valve
2	B-0109-06	3" Wall Bracket
3	014200-45	Star Washer, Anti-Rotation
4	B-2339-LR	Reel Control Cabinet w/ Control valve, Dual Check Valves, Thermometer
5	000999-45	Brass Lock Washer
6	002954-45	Shank Lock Nut
7	HW-4B-24	3/8" NPT x 24" Flexible Water Hose
8	AW-5B	3/8" NPT Quick Disconnect
9	002535-25	3/8" Close Nipple
10	B-7222-C05	Enclosed Epoxy Coated Steel Reel w/ 30' of 3/8" Hose & Front Trigger Gun
11	001359-40	Hex Bushing, 1/2" NPT Male x 3/8" NPT Female
12	MV-2522-24	Front Trigger Gun, 5/16" Orifice
13	019652-40	3/8" NPT Live Swivel

**Product Specifications:**  
 Enclosed Hose Reel w/ 30' Hose, Front Trigger Water Gun w/ Swivel, Continuous Pressure Vacuum Breaker, Rinse Control Cabinet w/ Control valve, Dual Check Valves, Thermometer, Water Hammer Arrestor & 3" Wall Bracket

**Product Compliance:**  
 ASME A112.18.1 / CSA B125.1  
 NSF 61 Exempt (Non-Potable)  
 EPA Act 2005 Non-Compliant (PRSV)  
 ASSE 1056 (VB)