



INSTALLATION, OPERATION & MAINTENANCE INSTRUCTIONS

1455 Kleppe Lane ♦ Sparks, NV 89431-6467 ♦ (775) 359-4712 ♦ Fax (775) 359-7424
E-mail: haws@hawsco.com ♦ website: www.hawsco.com

No. 0510001192 (3)

Model H1117LN.8 Water Cooler

NOTE TO INSTALLER: Please leave this information with the Maintenance Department.

Haws electric water coolers are not designed or recommended for outdoor or corrosive environments such as enclosed chlorinated pool areas.

Consideration must be made at the time of installation to adhere to state and/or local codes and environmental/atmospheric conditions such as, but not limited to, dust, corrosion, freezing etc. These conditions will void the warranty.

CAUTION! Prior to making any electrical connections, verify with a voltmeter that power from the service panel is **off**.

LIMITED WARRANTY

HAWS warrants that all of its products are guaranteed against defective material or poor workmanship for a period of **one year from the date of shipment**. The foregoing notwithstanding, *HAWS* warrants certain specific products or components thereof for an adjusted period. A list of these excepted products and components and a description of their respective warranty terms may be found here: www.hawsco.com/warranty. *HAWS'* liability under this warranty shall be discharged by furnishing without charge F.O.B. *HAWS* factory any goods, or part thereof, which shall appear to the Company upon inspection to be of defective material or not of first-class workmanship, provided that a claim is made in writing to Company within a reasonable period after receipt of the product. Where claims for defects are made, the defective part or parts shall be delivered to the Company, prepaid, for inspection. *HAWS* shall not be liable for the cost of repairs, alterations or replacements, or the labor required to implement them, or for any expense connected therewith made by the owner or owner's agents, except upon written authority from *HAWS*. *HAWS* shall not be liable for any damages caused by defective materials or poor workmanship, except for replacements, as provided above. Buyer agrees that *HAWS* has made no other warranties either express or implied in addition to those above stated, except that of title with respect to any of the products or equipment sold hereunder and that *HAWS* shall not be liable for general, special, incidental, or consequential damages claimed to arise under the contract of sale.

Equipment manufactured by *HAWS* is warranted to function if installation and maintenance instructions provided are adhered to. The units also must be used for the purpose for which they were intended. Any *HAWS* emergency equipment is intended to supplement first-aid treatment. Due to widely varying conditions, *HAWS* cannot guarantee that the use of this emergency equipment will prevent serious injury or the aggravation of existing or prior injuries.

EXCEPT AS EXPRESSLY STATED HEREIN, HAWS HEREBY DISCLAIMS ALL WARRANTIES, WHETHER EXPRESS OR IMPLIED, ARISING BY LAW OR OTHERWISE, INCLUDING WITHOUT LIMITATION, ANY IMPLIED WARRANTIES OF MERCHANTABILITY AND FITNESS FOR A PARTICULAR PURPOSE. THIS WARRANTY MAY NOT BE MODIFIED OR EXTENDED WITHOUT THE WRITTEN CONSENT OF HAWS. REMEDIES AND REPLACEMENTS STATED HEREIN ARE EXCLUSIVE. IN NO EVENT SHALL HAWS BE LIABLE FOR ANY SPECIAL, PUNITIVE, CONSEQUENTIAL OR INCIDENTAL DAMAGES TO ANY PERSON INCLUDING BUT NOT LIMITED TO DAMAGES FOR LOSS OF USE OR PROFITS, SUBSTITUTE PRODUCTS OR COSTS, PROPERTY DAMAGE, OR OTHER MONETARY LOSS.

SHOULD YOU EXPERIENCE DIFFICULTY WITH THE INSTALLATION OF THIS MODEL PLEASE CALL:

TECHNICAL SUPPORT: 1-800-766-5612
FOR CUSTOMER SERVICE: 1-888-640-4297

RECOMMENDED TOOLS: Hack saw, pipe joint sealant, screwdriver, level, 12" adjustable wrench, 10" pipe wrench, 5/64" hex key wrench, 9/16", 1/2", 7/16" socket wrench or open end wrench.

LOCATION OF UNIT: The Model H1117LN.8 Cooler is a wheelchair accessible drinking facility. The height dimensions shown, meet current ADA requirements. When installing this unit, local, state or federal codes should be adhered to. If height other than shown is required, then dimensions must be adjusted accordingly.

SUPPLY LINE: The minimum recommended line size is 1/2"IPS with 30-90 psi (2-6 ATM) flowing pressure. Where sediment or mineral content is a problem, an inlet filter is recommended.

PLUMBING CONNECTIONS: Inlet is 3/8" O.D. push-in type fitting. Waste outlet is female 1-1/4" IPS.

ELECTRICAL CONNECTIONS (Chiller): 115VAC, 60HZ, 4.7 AMPS. Chiller wired direct to incoming line, by others. ELECTRICAL CONNECTIONS (When equipped with optional Hands-Off Bottle Filler model 1920HO): Bottle Filler may be mounted on external wall of building provided transformer shall be mounted inside the wall and protected from water per NEC/CEC and local code.

Sensor: 1920HO with 1RKHO.H: 100-277VAC x 9VDC, 50-60Hz, 5 Watts

MAINTENANCE: Periodically clean the strainer (Located inside push button valves on model H1117LN.8 or 1920 if also installed). Refer to 5874 Series Valve Manual for more information. Also, clean supply line Y-strainer on model 1920HO (when equipped with this optional model).

PARTS LIST

MODEL PACKAGE	QUANTITY	ITEMS INCLUDED
MTGFR.LG	1	Mounting Frame (Required – Sold Separately)
	3	#10 Sheet Metal Screws
HCR8	1	Chiller (Required – Sold Separately)
H1117LN.8	1	Bowl Assembly
	1	Package supply tubing and fittings
	1	Grille
	2	Trap 1-1/4" IPS
	1	Package of two each grille attachment clips, clip nuts, #10 sheet metal screws and 6-32 screws
	8	5/16 -18 retainer nuts
	8	5/16 – 18 x 1 hex head screws

INSTALLATION PROCEDURE

GENERAL NOTES:

The Model H1117LN.8 Water Cooler assembly requires installation of the mounting frame as described in Steps 1 - 2, then mounting the fountain bowl assembly as described in Steps 3 - 6, and finally completing chiller water and electrical connections and starting chiller per Steps 7 - 11. First check that all required parts are received.

Grounding may cause electrical feedback into the electric drinking fountain causing an electrolysis, which creates a metallic taste or an increase in the metal content of the water. This condition can be avoided by using dielectric couplings in the assembly. The waste line, which is supplied by the installer, should also have a dielectric (plastic) coupling to completely isolate the assembly from the building plumbing system.

NOTES:

1. For all plastic push-in type fitting connections, only connect NSF-61 copper or plastic tubing. Stainless steel or glass tubing is not recommended. The following assembly instructions must be followed to ensure a watertight connection:
 - a. Cut tubing square and clean.
 - b. Mark from end of tube the length of insertion (See table below).
 - c. Push tube into the fitting until it bottoms out.
 - d. To remove, depress collet and pull tubing out.

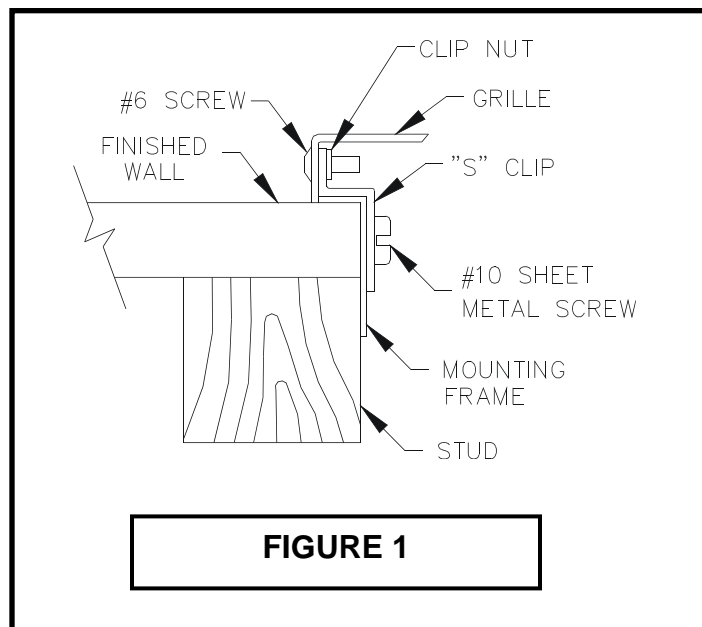
Tube Sizes	O.D. Tolerance	Insertion Depth
1/4"	±.005"	11/16"
3/8"	±.005"	3/4"

2. If installing this unit with optional 1920HO (Hands-Off Model) or 1920:
 - a. Refer to the 1920 Series manual (supplied with model 1920HO or 1920) for detailed installation & operation instructions.
 - b. It is recommended to use Model 6700 Mounting Plate (not supplied) with Model BP32 Back Panel (standard Hi-Lo configuration - not supplied).
 - c. Reference page 10 of this document for 1920HO sensor or 1920 push button height (Mounting hardware not supplied with Bottle Filler Water Dispenser).
 - d. Adjust nozzle flow rate using pressure regulator mounted inside bracket (1920HO) or front adjust screw located on push button valve (1920).
 - e. **Refer to the 1RKHO.H manual for Transformer and Sensor Setup instructions (supplied with model 1920HO).**

STEP 1: Provide wall opening as detailed in Installation Drawing. Frame must be positioned such that frame flanges overlap and butt against finished wall surface. Mounting holes are provided for #6 sheet metal screws. After frame is positioned in wall, swing chiller support tray into position (See Installation Drawing), align tray holes with holes in frame and fasten with #10 sheet metal screws. Mounted frame must support 50-pound chiller in addition to fountain weight and user generated forces.

INSTALLATION PROCEDURE...

- STEP 2:** Install waste, supply and electrical lines in locations shown in Installation Drawing. Waste and supply lines may be installed for either rear or side entry. Verify proper waste, supply, electrical and frame locations. Use level to verify horizontal and vertical frame mounting to insure proper bowl drainage.
- STEP 3:** Installation Drawing shows fountain bowls, back panel and grille locations. Unpack bowls and remove bottom plates using 5/64" hex allen wrench. Install back panel on frame with narrower edge to bottom. Position nut retainers into mounting frame and use two 5/16-18x1 hex head screws partially started in outside holes to support panel. Install bowl/bracket assembly onto panel using eight 5/16-18x1 hex head screws hand tightened. See sheet 2 of Installation Drawing for appropriate bowl mounting pattern to use for this model.
- STEP 4:** Remove 1-1/4" IPS outlet elbow from traps as supplied. Install elbow inside frame onto waste stub-outs.
- STEP 5:** Assemble waste trap onto bowl strainer using seal washer provided and tighten nut hand tight.
- STEP 6:** See Figure 1 for detail section view of side screw grille attachment. Unpack grille and insert upper lip behind bottom of back panel, align sides and hold up flush to bottom of back panel. Hold grille against wall and mark centers of grille side slots on wall. Masking tape may be used to prevent finished wall damage from mark. Install the "s" clips in mounting frame using #10 sheet metal screws into pre-drilled holes on lower end of each side of frame. Tighten #10 screw while holding "s" clips centered on wall marks. Check grille fit by installing grille and partially tightening #6-23 socket head screws through side of grille. Ensure proper panel and grille alignment, then tighten eight 5/16-18x1 hex head screws.
- STEP 7:** Unpack and remove chiller from carton. Remove front panel screws and panel. Do not remove insulating putty and foam from copper tubes or Styrofoam insulation from evaporator coil. Remove any inner packing, which may be around compressor. If applicable, remove junction box cover and electrical knock out on lower right side of housing. Install fittings (supplied) on chiller inlet and outlet tubes (see Installation Drawing).
- STEP 8:** Thoroughly flush supply line to remove all foreign matter. Connect 1/2" IPS supply screwdriver stop to stub-out in wall. Place chiller on chiller support tray against right hand side, fully to rear, with condenser (open panel) side facing to front. Install supply 3/8" O.D. tubing (not supplied) between screwdriver stop and chiller inlet. (Cut tubing to proper length and follow general notes for proper connection procedures for push-in type fittings). Tubing insulation is not normally required on inlet side of chiller. Install insulated tube between fountain and solenoid valve outlet. Cut tubes as required and connect to chiller outlet compression tee assembly. Open screwdriver stop **wide open** while checking for leaks at all connections. Push fountain operator to fill chiller and remove air from tubing.



INSTALLATION PROCEDURE...

- STEP 9:** Adjust bubbler stream height using small flathead screwdriver inserted through a hole in the center of the push button for increased flow turn clockwise and for decreased flow turn counterclockwise. If flow problems arise, see troubleshooting guide for additional instructions to correct problem. Bubbler stream may lower during short break-in period. Set initial stream height a little high to minimize or eliminate the need for break-in period readjustment.
- STEP 10:** Verify that electrical power is off and power supply voltage, phase and cycle match specifications printed on chiller label. In accordance with local codes, wire directly to incoming lines at internal chiller junction box. Verify that all inner packing is removed and hand rotate fan blade to verify free rotation. Reattach chiller front panel. Turn power on and verify that chiller cycles off after water reaches proper temperature. Finally check for leaks.
- STEP 11:** Install grille and tighten outer side screws. Verify there is chilled water out of bubbler.

MAINTENANCE

- STEP 1:** Periodically clean the strainer (Located inside push button valves on model H1117LN.8 or 1920 if also installed). Refer to 5874 Series Valve Manual for more information. Also, clean supply line Y-strainer on model 1920HO (when equipped with this optional model).
- STEP 2:** The condenser fins on chiller should be periodically cleaned with brush, air hose or vacuum cleaner. Care should be taken not to bend or deform the condenser fins.
- STEP 3:** The chiller temperature control is factory set for 50°F water under normal conditions. For colder water, adjust control clockwise. For warmer water, turn counterclockwise. Remove front chiller panel for access to temperature control. After adjustment allow unit to cycle off before checking outlet water temperature.

5874 SERIES VALVE TROUBLESHOOTING (MODEL H1117LN.8 AND WHEN EQUIPPED WITH OPTIONAL MODEL 1920)

PROBLEM	REPAIR CHECKLIST
1. Insufficient bubbler or nozzle flow.	1a. Check that inlet screwdriver stop valve is in wide-open position. Turn counterclockwise or clockwise. Direction depends on style of shut-off valve. b. Verify minimum 30 psi flowing supply pressure. c. Clean strainer. See 5874 Series Valve Manual. d. Adjust valve to increase flow. Use front adjust screw or see 5874 Series Valve Manual. e. Make sure bottle filler nozzle is free of debris.
2. Water too warm or cold.	2a. Adjust chiller temperature control, clockwise for colder water.

SENSOR/SOLENOID TROUBLESHOOTING (WHEN EQUIPPED WITH HANDS-OFF MODEL 1920HO. REFER TO 1RKHO.H MANUAL FOR EXPANDED LIST)

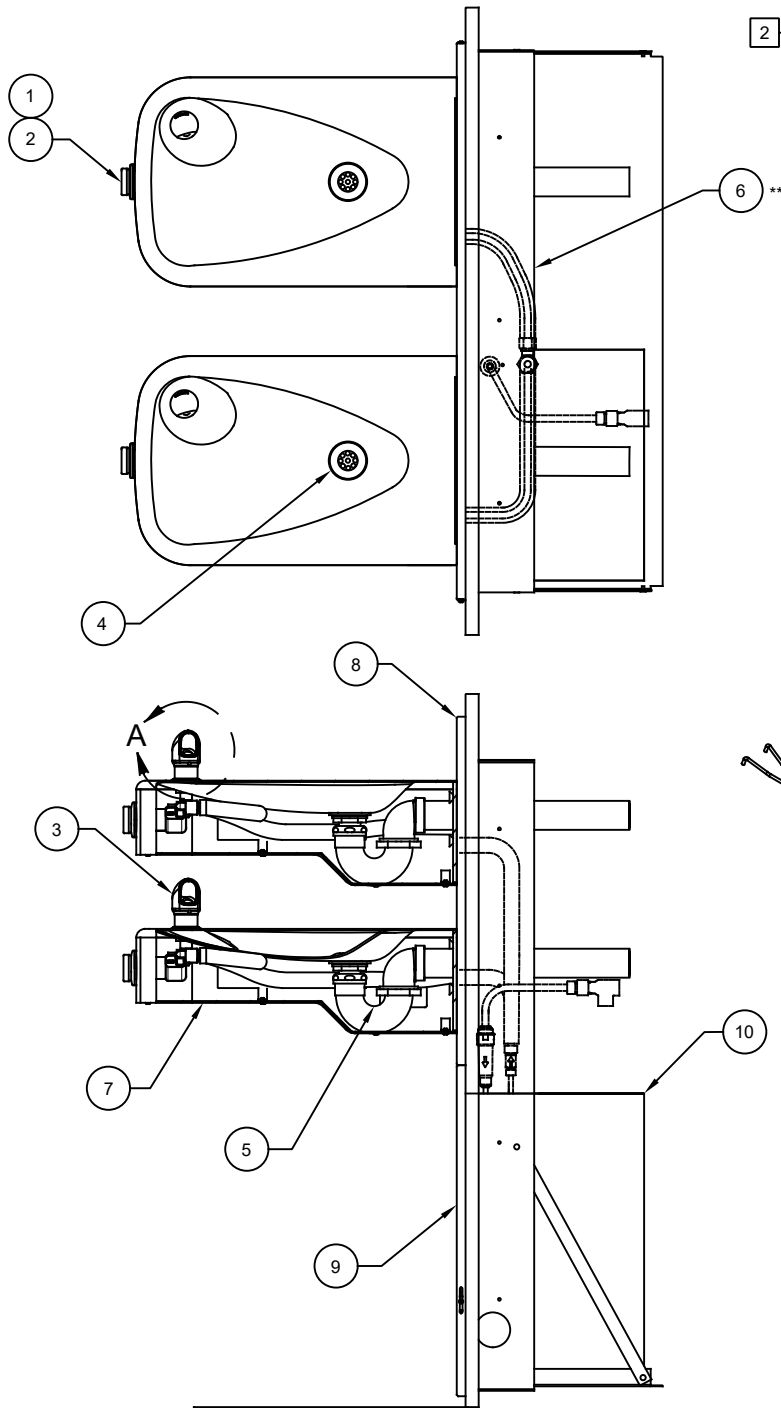
PROBLEM	REPAIR CHECKLIST
1. Insufficient nozzle flow.	1a. Check that inlet screwdriver stop valve is wide open. Turn counterclockwise or clockwise. Direction depends on style of shut-off valve. b. Verify minimum 30 psi flowing supply pressure. c. Clean supply line Y-strainer. d. Adjust pressure regulator valve to increase flow (Loosen locknut and rotate knob clockwise to increase flow and tighten locknut). e. Make sure bottle filler nozzle is free of debris.
2. Nozzle does not activate.	2a. Check wiring harness. Replace if necessary. b. Check solenoid valve. Replace if necessary. c. Check sensor. Replace if necessary. d. Check transformer for 9V output at terminals; replace if necessary.

For more information about Haws products, see our website: www.hawSCO.com

NOTES:

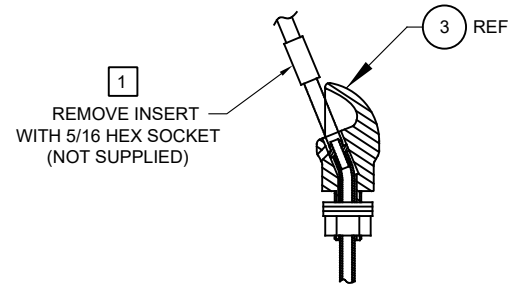
1 ENSURE TUBE IS DISCONNECTED FROM PUSH BUTTON VALVE BODY PRIOR TO REMOVAL. APPLY ONE DROP OF LOCTITE 222MS TO NOZZLE THREADS PRIOR TO FASTENING BACK ONTO BUBBLER HEAD. RE-ATTACH TUBE TO VALVE.

2 ITEMS 13 THRU 17 ARE OPTIONAL AND CAN BE CONFIGURED TO ADD EITHER A HANDS-OFF (1920HO) OR PUSH BUTTON (1920) BOTTLE FILLER, MOUNTED ON R.H. SIDE OF BACK PANEL (BP32) OR L.H. SIDE (REVERSED) OF BACK PANEL (BP32R) ON DUAL FOUNTAIN MODEL 1117LN.

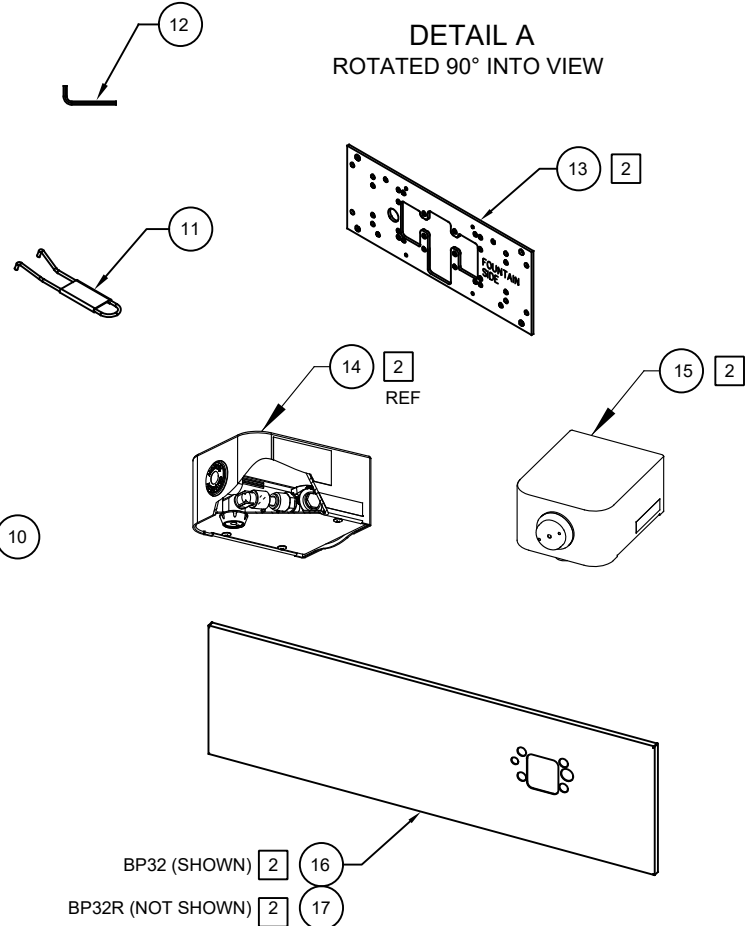


ITEM	DESCRIPTION	PART NO.
1	VALVE REPAIR KIT	VRK5874
2	PUSH BUTTON ASSY	PBA6
3	BUBBLER HEAD ASSY, PCP	5703M
4	STRAINER, WASTE ASSY	6462
5	TRAP	0005982900
** 6	MOUNTING FRAME	MTGFR.LG
7	PLATE BOTTOM	PBM1107
8	BACK PANEL 1117LN	0410000218
9	GRILLE 1117L P/N	0002626651
10	REMOTE CHILLER	HCR8
11	SPANNER WRENCH	0006983506
12	KEY HEX F/PINNED HEX	0002981127
13	PLATE MOUNTING	6700
14	BOTTLE FILLER, HANDS-OFF	1920HO
15	BOTTLE FILLER	1920
16	BACK PANEL FOR 1920 OVER DUAL FOUNTAIN	BP32
17	BACK PANEL BF 32 REVERSED	BP32R

** REQUIRED - SOLD SEPARATELY



DETAIL A
ROTATED 90° INTO VIEW



PARTS BREAKDOWN

WHEN ORDERING PARTS PLEASE SPECIFY MODEL NUMBER.

			1455 KLEPPE LANE SPARKS, NEVADA 89431 (775) 359-4712 FAX (775) 359-7424 E-MAIL: HAWS@HAWS.CO.COM WEBSITE: WWW.HAWS.CO.COM	
ECN NO. REVISED PER BY	MODEL(S)		PART NUMBER	
.5671 ECN: 5745 FV	H1117LN.8		0510001192	
DRAWN DATE CHKD BJM	APPROVED DATE		REVISION	
DP 03/23/21	FV 10/11/21		3	
SCALE: N/A		DRAWING TYPE: PARTS BREAKDOWN		SIZE: A SHEET 1 OF 1

NOTES:

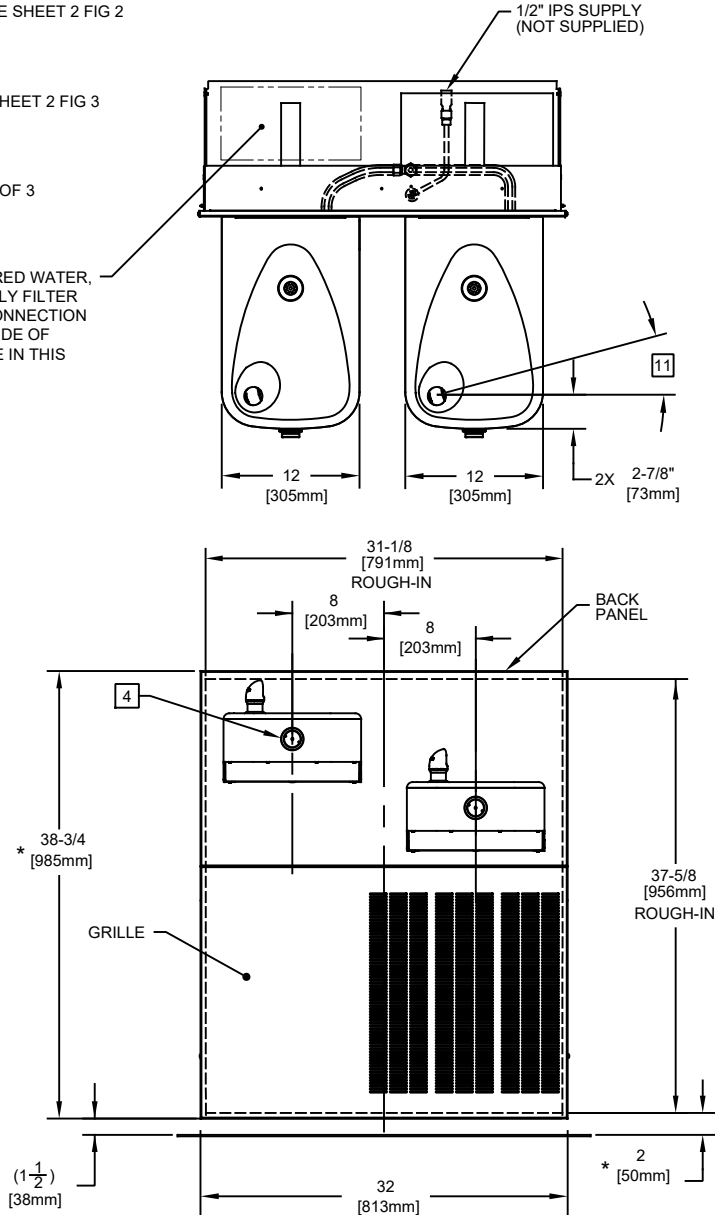
1. HOLD ROUGH-IN DIMENSIONS $\pm 1/8"$ (3.2mm)
2. WHEN INSTALLING THIS UNIT, LOCAL, STATE, OR FEDERAL CODES SHOULD BE ADHERED TO. FOR INSTALLATION HEIGHTS OTHER THAN SHOWN, DIMENSIONS MARKED (*) MUST BE ADJUSTED ACCORDINGLY.
- 3 REFER TO MTGFR.LG INSTALLATION DRAWING FOR FRAME ROUGH-IN DIMENSIONS.
- 4 REFER TO 5874 SERIES OPERATION AND MAINTENANCE MANUAL FOR PUSH BUTTON AND VALVE INSTALLATION/MAINTENANCE INSTRUCTIONS.
- 5 ROUGH-IN DIMENSIONS FOR FOUNTAIN HEIGHTS:

ADULT WHEELCHAIR HEIGHT: SEE SHEET 2 FIG 2
 WASTE: 29-1/4" (743mm)
 FOUNTAIN: 27" (686mm)
 BUBBLER: 32-7/8" (832mm)

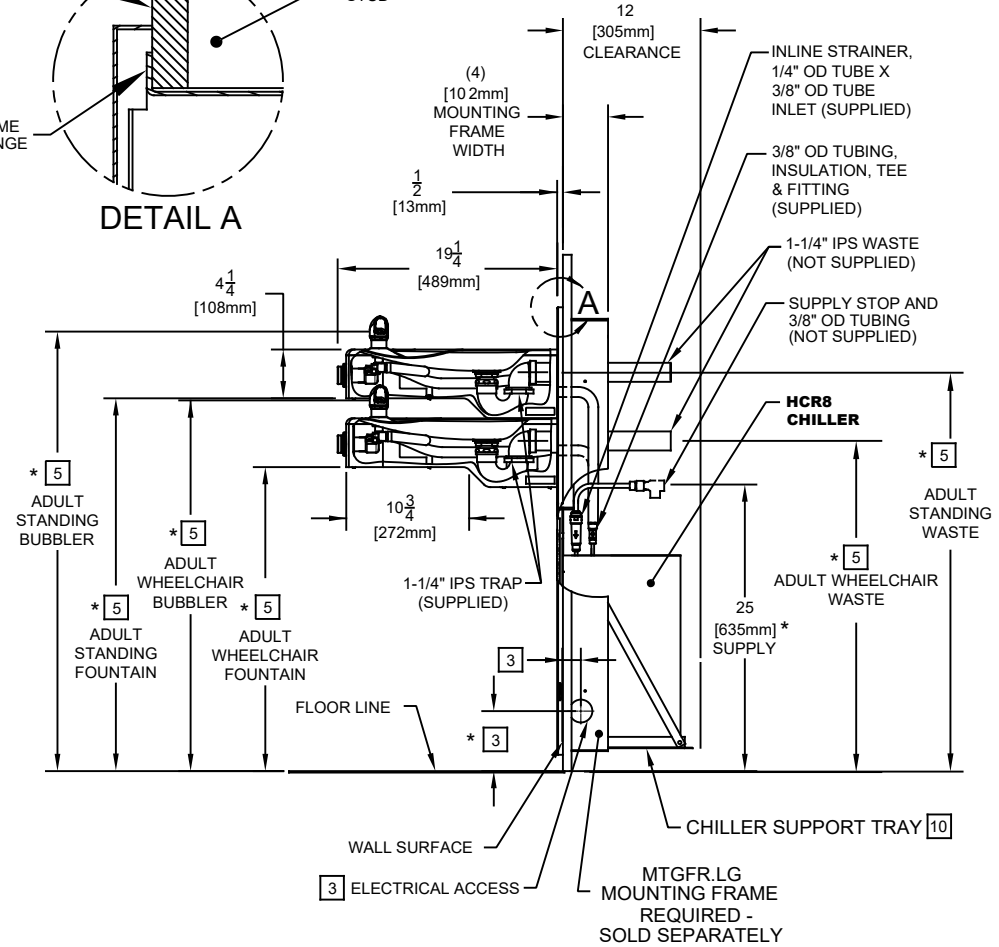
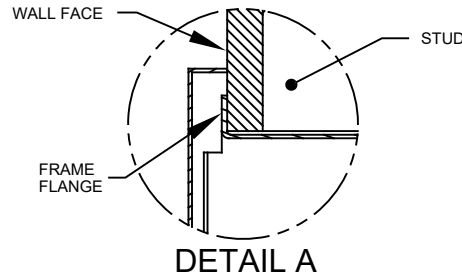
ADULT STANDING HEIGHT: SEE SHEET 2 FIG 3
 WASTE: 34-3/4" (883mm)
 FOUNTAIN: 32-1/2" (826mm)
 BUBBLER: 39-3/8" (972mm)

NOTES CONTINUED ON SHEET 2 OF 3

NOTE: FOR FILTERED WATER, OTHERS TO SUPPLY FILTER PRIOR TO THIS CONNECTION AND MOUNT TO SIDE OF MOUNTING FRAME IN THIS LOCATION.



IMPORTANT: MOUNTING FRAME MUST BE INSTALLED SO THAT LIP OF FRAME SITS AGAINST FINISHED WALL FACE.



SEE SHEET 3 FOR OPTIONAL 1920/1920HO BOTTLE FILLER WATER DISPENSER, SHOWN INSTALLED OVER MODEL H1117LN.8

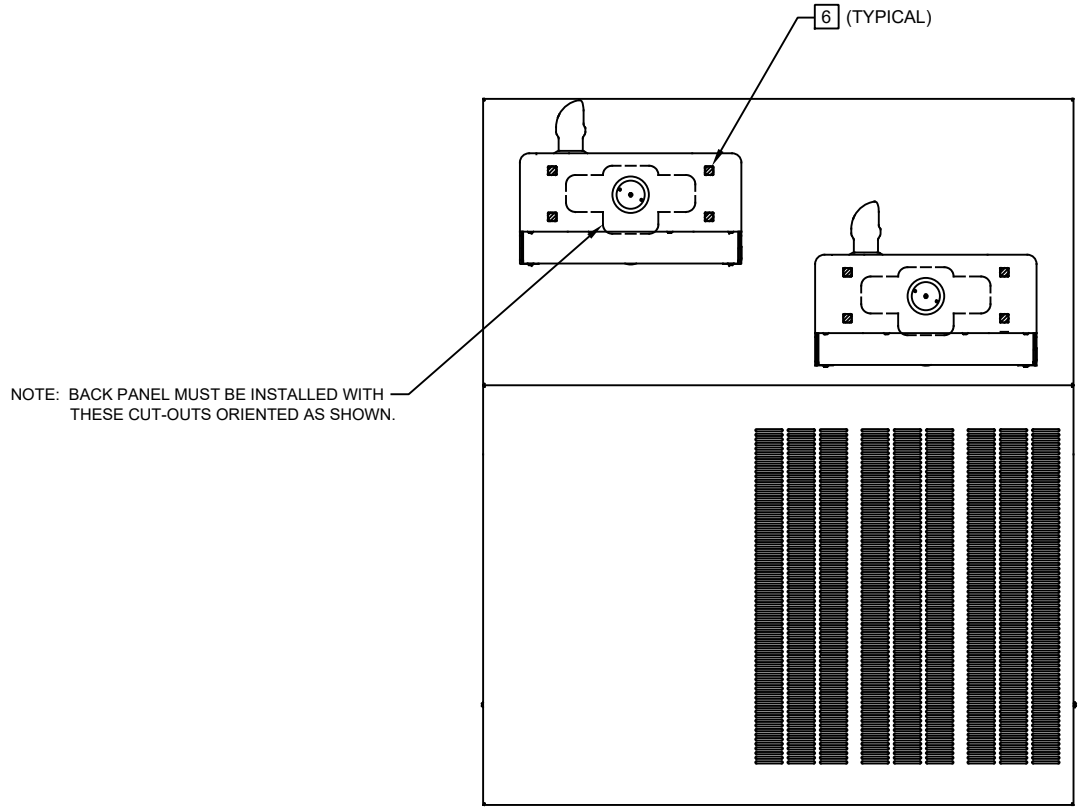
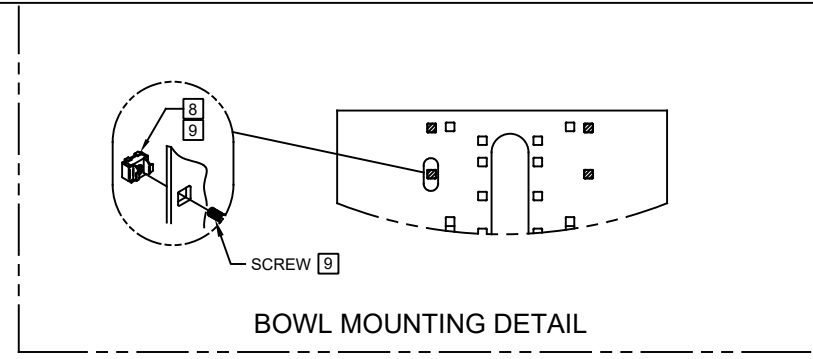


1455 KLEPPE LANE
 SPARKS, NEVADA 89431
 (775) 359-4712 FAX (775) 359-7424
 E-MAIL: HAWS@HAWS.CO.COM
 WEBSITE: WWW.HAWS.CO.COM

ECN NO. 5671	REVISED PER ECN: 5745	BY: FV	MODEL(S) H1117LN.8	PART NUMBER 0510001192.D
DRAWN: DP	DATE: 03/24/21	CHKD.: BJM	REVISION 3	
APPROVED: FV	DATE: 10/11/21	SCALE: N/A	DRAWING TYPE: INSTALLATION	SIZE: A SHEET 1 OF 3

NOTES (CONTINUED FROM SHEET 1):

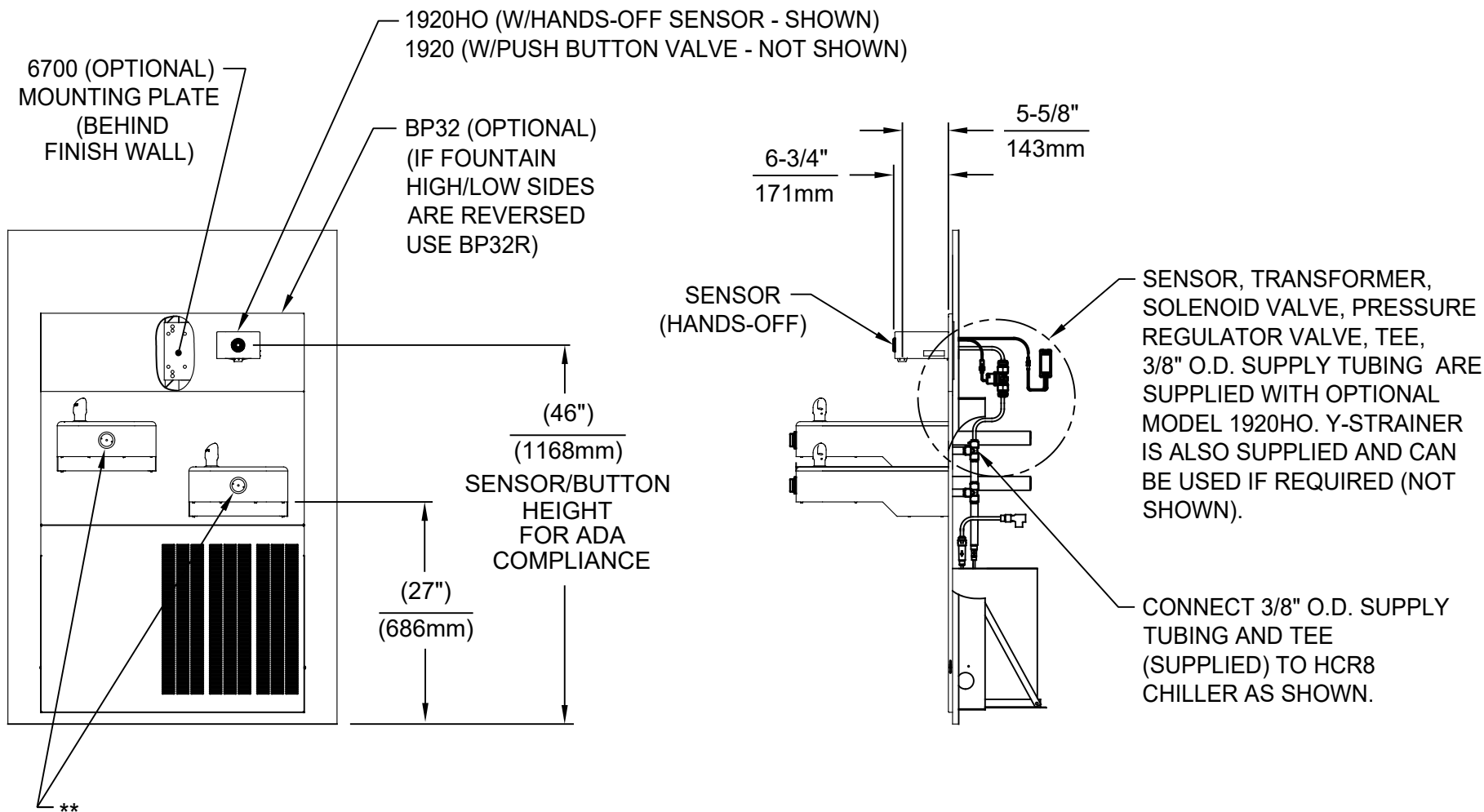
- 6 USE SHADED HOLES TO MOUNT BOWLS AT INDICATED POSITIONS.
- 7. REFER TO SHEET 1 OF 3 NOTE 5, FOR INSTALLED FOUNTAIN DIMENSIONS.
- 8 INSERT 5/16"-18 PANEL NUT RETAINERS FROM OPPOSITE SIDE AT LOCATIONS INDICATED (SHOWN BY DARKENED HOLES). USE THE UPPER OUTERMOST HOLES ON THE LEFT AND LOWER OUTERMOST HOLES ON THE RIGHT.
- 9 TO INSERT OR REMOVE NUT RETAINERS: SNAP NUT RETAINERS INTO INDICATED LOCATIONS. IF REMOVAL IS REQUIRED, FIRST REMOVE SCREWS AND THEN SQUEEZE CLIPS ON NUT RETAINER TO POP OUT.
- 10 ALIGN HOLES IN CHILLER SUPPORT TRAY WITH HOLES IN FRAME AND FASTEN WITH #10 SHEETMETAL SCREWS (SEE SHEET 1).
- 11 MAXIMUM ADJUSTABLE RANGE IS 15° FROM PARALLEL TO BACK OF WALL.



BOWL MOUNTING LOCATIONS


1455 KLEPPE LANE
SPARKS, NEVADA 89431
(775) 359-4712 FAX (775) 359-7424
E-MAIL: HAWS@HAWS.CO.COM
WEBSITE: WWW.HAWS.CO.COM

ECN NO. 5671	REVISED PER ECN: 5745	BY: FV	MODEL(S) H1117LN.8	PART NUMBER 0510001192.D
DRAWN: DP	DATE: 03/24/21	CHKD.: BJM		REVISION 3
APPROVED: FV	DATE: 10/11/21	SCALE: N/A	DRAWING TYPE: INSTALLATION	SIZE: A SHEET 2 OF 3



OPTIONAL 1920/1920HO BOTTLE FILLER WATER DISPENSER
 (1920HO SHOWN) INSTALLED OVER H1117LN.8
 (SEE 1920 SERIES OPERATION AND MAINTENANCE MANUAL FOR COMPLETE DETAILS)
 SEE SHEET 1 FOR H1117LN.8 ROUGH-IN DIMENSIONS

** EXISTING PUSH BUTTON ASSEMBLY SHOWN, CAN BE CONVERTED TO HANDS OFF STYLE, USING RETRO-FIT KIT MODEL 1RKHO.H OR 2RKHO.H DEPENDING ON CUSTOMER REQUIREMENTS.

		1455 KLEPPE LANE SPARKS, NEVADA 89431 (775) 359-4712 FAX (775) 359-7424 E-MAIL: HAWS@HAWSCO.COM WEBSITE: WWW.HAWSCO.COM	
		ECN NO. 5745 DRAWN: FV APPROVED: FV	REVISED PER: ECN: 5745 DATE: 10/09/21 DATE: 10/11/21
PART NUMBER 0510001192.D			REVISION 3
SCALE: N/A		DRAWING TYPE: INSTALLATION	SIZE: A SHEET 3 OF 3